



Cambridge International Examinations
Cambridge International General Certificate of Secondary Education

ECONOMICS

0455/12

Paper 1 Multiple Choice

May/June 2017

45 minutes

Additional Materials: Multiple Choice Answer Sheet
 Soft clean eraser
 Soft pencil (type B or HB is recommended)

* 5 8 5 3 6 5 2 7 5 5 *

READ THESE INSTRUCTIONS FIRST

Write in soft pencil.

Do not use staples, paper clips, glue or correction fluid.

Write your name, Centre number and candidate number on the Answer Sheet in the spaces provided unless this has been done for you.

DO NOT WRITE IN ANY BARCODES.

There are **thirty** questions on this paper. Answer **all** questions. For each question there are four possible answers **A, B, C** and **D**.

Choose the **one** you consider correct and record your choice in **soft pencil** on the separate Answer Sheet.

Read the instructions on the Answer Sheet very carefully.

Each correct answer will score one mark. A mark will not be deducted for a wrong answer.

Any rough working should be done in this booklet.

This document consists of **9** printed pages and **3** blank pages.

1 Which is **not** a factor of production?

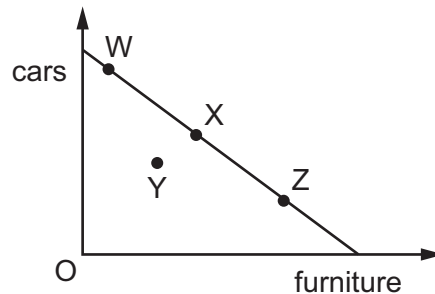
- A a farm
- B a farmer
- C a farmer's bank account
- D a second-hand tractor

2 Heavy rain caused floods in an area of a country.

What may be an opportunity cost of repairing the damage caused?

- A the allocation of government funds to the area instead of on a new airport
- B the cost of providing shelter for those made homeless
- C the decline in the tourist industry in the area
- D the loss of profits from businesses affected by the flood

3 The diagram shows a production possibility curve for cars and furniture.



A recession causes a decrease in production in both cars and furniture.

Which movement would represent this change?

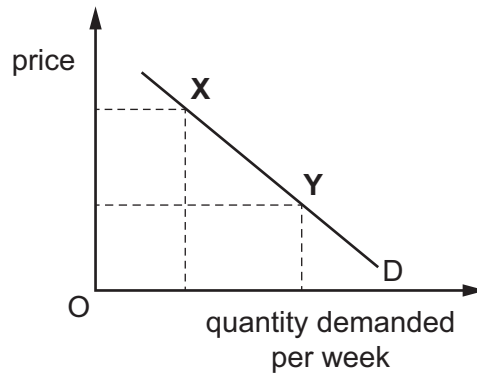
- A X to W
- B X to Y
- C Z to W
- D Z to Y

4 In response to an increase in price from \$5 per kilo to \$6 per kilo a chicken farmer increased supply from 400 kilos to 500 kilos per week.

What is the price elasticity of supply?

- A 0.8
- B 0.9
- C 1.2
- D 1.25

- 5 The diagram shows the demand for chocolate.



What could cause the movement from point X to point Y?

- A a change in tastes
 - B a fall in the price of chocolate
 - C an increase in income
 - D a successful advertising campaign for chocolate
- 6 A bee-keeper maintains hives of bees to produce honey. The bees can pollinate neighbours' fruit trees but also give a painful sting to gardeners.

If both of these events occur, how will costs and benefits be affected?

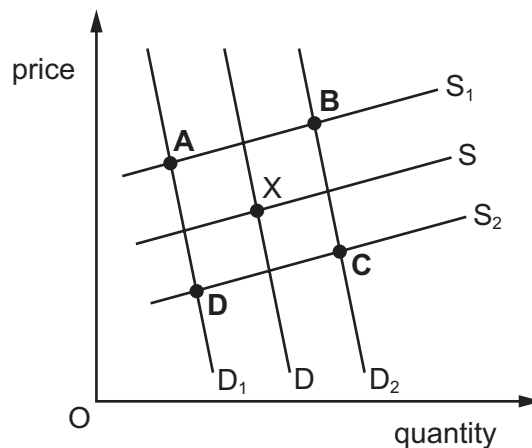
- A External benefits will fall and social costs will fall.
 - B External costs will rise and social benefits will fall.
 - C Social costs and social benefits will fall.
 - D Social costs and social benefits will rise.
- 7 In 2015 there was a significant fall in the world price of petrol (gasoline).

What would **not** have been a cause of the price fall?

- A the continuing global recovery from the world economic recession
- B the increasing exploitation of US oil reserves
- C the re-entry of Iranian producers to the world oil market
- D the shorter journeys from using the new Suez Canal

- 8 Which statement about financial matters is correct?
- A** Commercial banks' main activity is the finance of international trade.
- B** Paper banknotes possess all the desirable properties needed to act as money.
- C** Stock exchanges trade mainly in second-hand stocks and shares.
- D** The central bank acts as the lender of last resort to companies facing bankruptcy.
- 9 What is most likely to be used to support a claim for wage increases in an industry?
- A** a decrease in the industry's sales
- B** a decrease in the need for specialist training
- C** an increase in cheap imports of a rival product
- D** an increase in wages in a similar industry
- 10 The government increases the rate of income tax and decreases the rate of a sales tax (VAT).

From the initial equilibrium point of X, which letter indicates the new equilibrium point in a market for normal goods?



- 11 In South Africa, the number of skilled workers is relatively low. However, average wages in South Africa are double the average wage in Brazil and Turkey and they are 1.6 times higher than in Malaysia.

What may be concluded from this information?

- A** Malaysian workers are more skilled than South African workers.
- B** Prices in South Africa are double those in Brazil.
- C** South Africa's labour productivity is low.
- D** South African trade union bargaining power is strong.

- 12 To achieve horizontal integration, a firm producing tyres could merge with another firm producing
- A motor cars.
 - B rubber.
 - C tyre-producing machinery.
 - D tyres.

- 13 Which costs will necessarily fall continuously as output increases?

- A average fixed costs
- B average variable costs
- C opportunity costs
- D repayment costs of borrowing

- 14 A monopoly takes over an industry from competitive firms.

What is **not** likely to be true about a monopoly compared with a competitive firm?

- A A monopoly will earn a higher rate of profit.
- B A monopoly will gain a greater share of the market.
- C A monopoly will offer a wider choice to the consumer.
- D A monopoly will operate on a larger scale of production.

- 15 The table shows the costs of a firm.

units of output	variable cost (\$)	total cost (\$)
10	15	85
20	25	95
30	35	105
40	45	115

What is the value of the firm's fixed costs?

- A \$10
- B \$15
- C \$70
- D \$85

16 When is a tax progressive?

- A when some goods have a higher tax than others
- B when the rate of tax increases as income increases
- C when the tax is linked to the rate of inflation
- D when the tax is on incomes rather than on goods or services

17 A government wishes to try to make the distribution of income in the country more equal.

Which policy would be most likely to achieve this?

- A reducing housing subsidies
- B reducing indirect tax on food
- C reducing inheritance tax
- D reducing tax on the dividends on stocks and shares

18 In trying to achieve one of its aims a government may make it difficult to achieve another aim.

What is an example of this conflict?

- A Achieving a more even distribution of income may prevent a rise in the average standard of living.
- B Achieving an increase in economic growth may prevent full employment.
- C Achieving full employment may prevent stable prices.
- D Achieving stable prices may prevent a current account surplus on the balance of payments.

19 Which policy combination will be the **most** effective if a government wishes to increase the level of employment?

- A decrease general taxation and decrease the rate of interest
- B decrease general taxation and increase the rate of interest
- C increase general taxation and decrease the rate of interest
- D increase general taxation and increase the rate of interest

20 A newspaper reported that a country's economy had grown by 3% during the last year.

What must have increased in that year?

- A costs of production
- B gross domestic product
- C unemployment
- D wage levels

21 What is meant by deflation?

- A a fall in the general price level
- B a fall in the international value of a currency
- C a fall in the rate of inflation
- D a fall in the real value of money

22 The information below refers to an economy for a financial year.

government expenditure = \$2866 million

government revenue = \$1940 million

What was the budget balance of the government in that year?

- A \$926 million in deficit
- B \$4806 million in deficit
- C \$926 million in surplus
- D \$4806 million in surplus

23 What is the change in GDP per head, after taking account of price increases (real change), between 2000 and 2013?

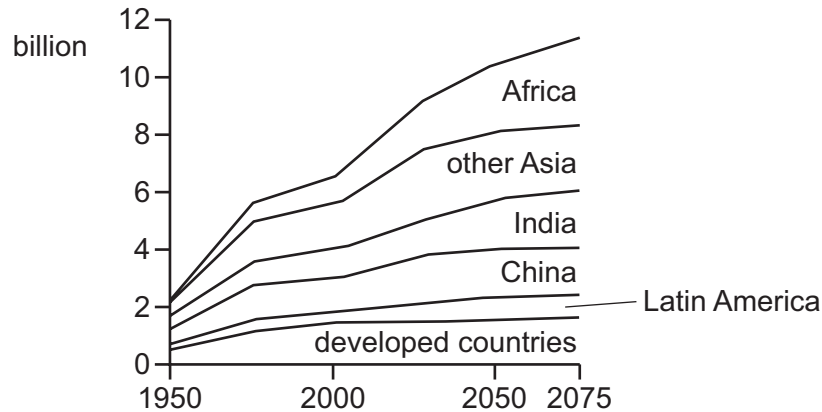
year	population million	consumer prices index (CPI)	GDP \$billion
2000	3	100	4000
2013	4	120	6000

- A from \$15 to \$125
- B from \$1250 to \$1333
- C from \$1333 to \$1250
- D from \$1333 to \$1500

24 Which statement about the poorest families in developing economies is **not** likely to be correct?

- A The children will be expected to work to help provide income.
- B The family will find it easy to obtain loans to develop their farms.
- C The family will have a low earning capacity.
- D The family will suffer from malnutrition and lack of medical care.

25 The diagram shows population projections until the year 2075 for selected areas.



Assuming no migration, which situation must exist if the population is to change in the manner shown in the diagram?

- A birth rate falling and death rate falling
- B birth rate greater than death rate
- C death rate greater than birth rate
- D death rate rising and birth rate falling

26 The table shows information about four countries.

Which country is likely to be least developed?

	% of labour force in service industries	life expectancy	GDP per head (\$)
A	20	49	380
B	35	49	350
C	40	53	350
D	45	63	450

27 Which government policy is most likely to increase the volume of exports?

- A devaluation
- B embargoes
- C quotas
- D tariffs

28 What might encourage international specialisation between countries?

- A free trade
- B inefficiencies in production
- C labour immobility
- D tariffs

29 In 2015, Russia banned the imports of food, such as milk, from the European Union (EU).

Which outcomes are most likely to happen as a result?

	milk market in Europe	price of milk in Russia	profits of EU farmers
A	excess demand	fall	rise
B	excess demand	rise	rise
C	excess supply	fall	fall
D	excess supply	rise	fall

30 In 2010, Vietnam experienced a deficit in the value of its trade in goods (visible) despite exporting a greater number of goods than it imported.

What could explain this?

- A The average price of its goods imported exceeded the average price of its goods exported.
- B The average value of its goods exported exceeded the average value of its goods imported.
- C The country had a deficit on its trade in services.
- D The country's government imposed tariffs on imports.

BLANK PAGE

Permission to reproduce items where third-party owned material protected by copyright is included has been sought and cleared where possible. Every reasonable effort has been made by the publisher (UCLES) to trace copyright holders, but if any items requiring clearance have unwittingly been included, the publisher will be pleased to make amends at the earliest possible opportunity.

To avoid the issue of disclosure of answer-related information to candidates, all copyright acknowledgements are reproduced online in the Cambridge International Examinations Copyright Acknowledgements Booklet. This is produced for each series of examinations and is freely available to download at www.cie.org.uk after the live examination series.

Cambridge International Examinations is part of the Cambridge Assessment Group. Cambridge Assessment is the brand name of University of Cambridge Local Examinations Syndicate (UCLES), which is itself a department of the University of Cambridge.